

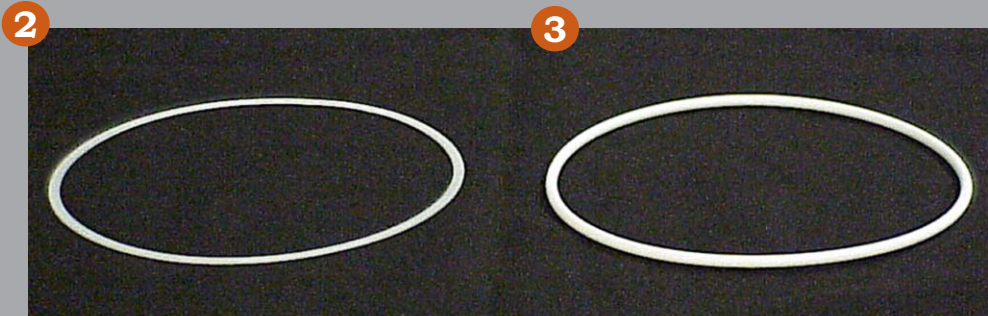
# Acetone Package Kit for 2.5" Process Chamber

## Components

1. Spanning Wrench (# 8770-59)
2. Backing Rng (# 8770-51/S25T-BR)
3. Teflon® O-Ring (8770-51/S25T)



Spanning Wrench  
(Cat # 8770-59)




Backing Ring for  
Autosamdri®-931 with 2.5" I.D. Chamber  
(Cat #: 8770-51/S25T-BR)

Chamber O-Ring for  
Autosamdri®-931 with 2.5" I.D. Chamber  
(Cat #: 8770-51/S25T)

# Chamber Seal Installation


**STEP 1**



Chamber Gland


Autosamdri®-931 Chamber with no seals in chamber gland.

**STEP 2**



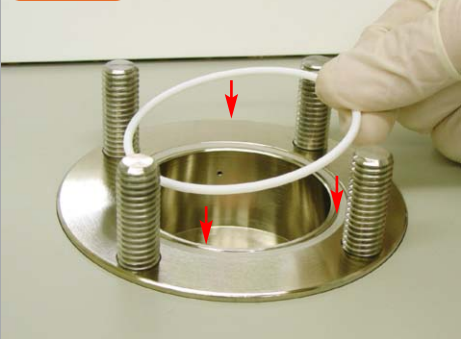
Install Backing Ring into the Autosamdri®-931 chamber gland.

**STEP 3**




Autosamdri®-931 Chamber installed with Backing Ring.

**STEP 4**



Next, carefully install a new Chamber O-Ring on top of the Backing Ring.

**STEP 5**

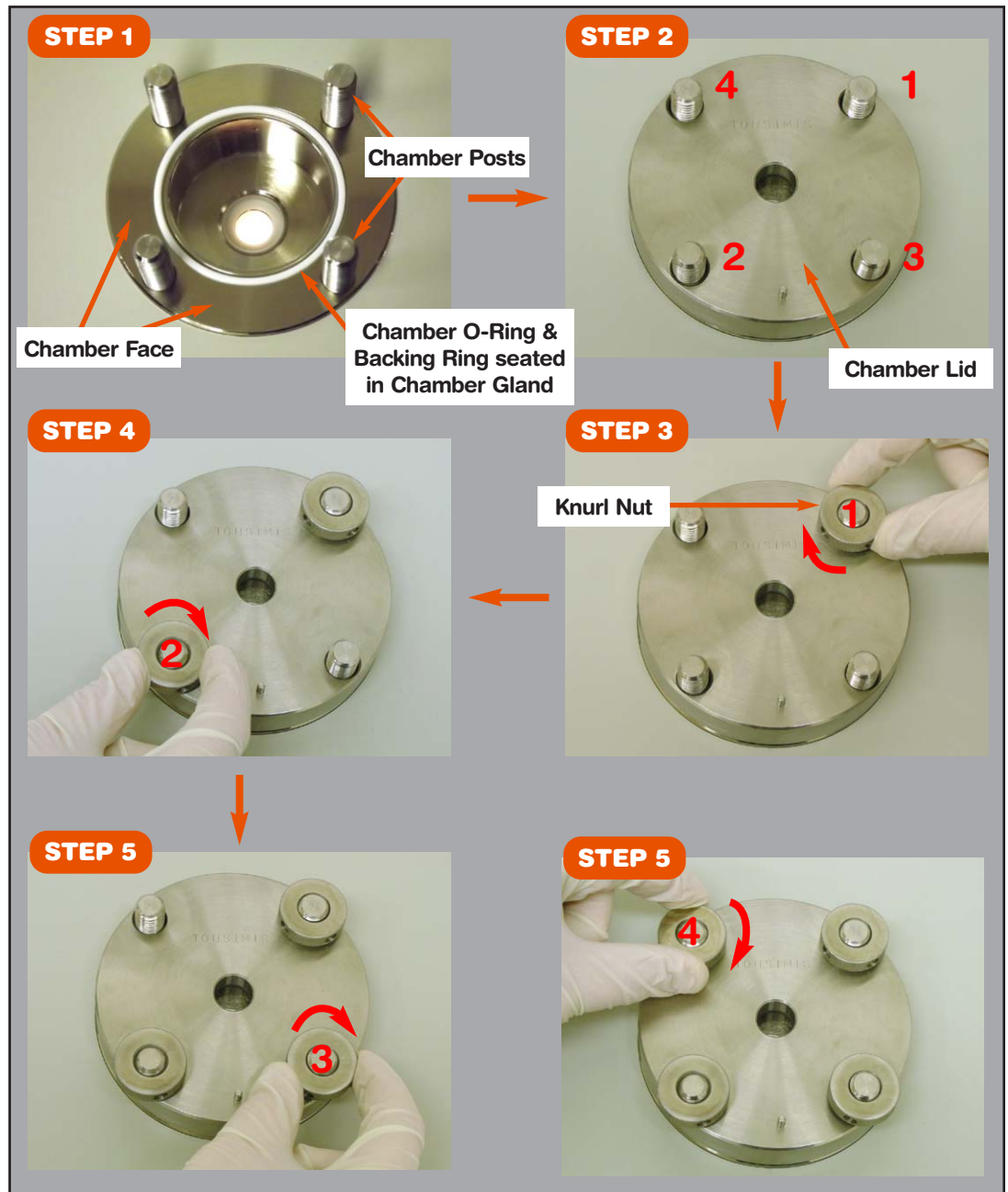


Autosamdri®-931 Chamber with teflon® O-Ring installed on top of Backing Ring.

# Closing Autosamdri® 931 Process Chamber Lid

## Chamber Sealing Procedure

1. Prior to placing chamber lid onto chamber, be sure that o-ring and surrounding chamber surface is clean and moisture free (NO Grease).
2. Carefully align chamber lid holes over chamber posts and slowly lower onto chamber face.
3. Carefully place the 4 Knurl Nuts onto each appropriate chamber post and turn in a clockwise direction by the diagonal order (as shown in Step 2 below) until flush with chamber.



## Securing Autosamdri®-931 Chamber Lid

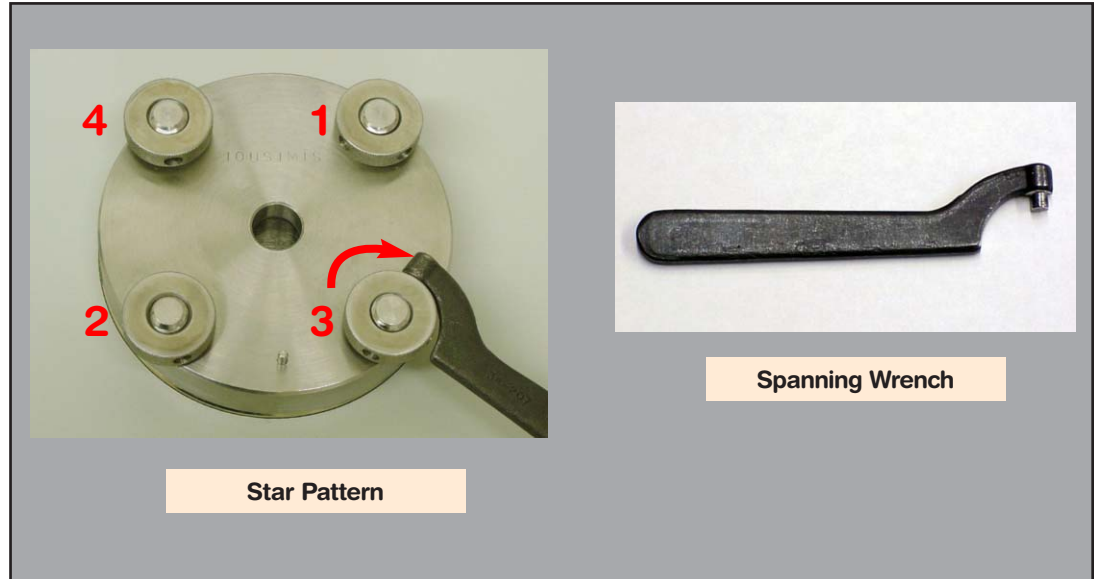
4. Insert the Spanning Wrench into the side hole of each knurl nut and gently tighten each knurl nut firmly in a clockwise direction. Tighten knurl nuts in “Star Pattern” as shown below:



### NOTE:

There is no need to over-tighten knurl nuts with Spanning Wrench. Only firm gentle force required to make seal.

*DO NOT  
OVER TIGHTEN OR  
USE ANY ALTERNATIVE  
TIGHTENING TOOL.*



5. Chamber is now secure and ready for initiating a process run as per the following operational procedures listed in Chapter 4..

## Chamber Opening Sequence



### NOTE:

Never scratch the chamber viewing port window - this could weaken it and may cause it to crack under pressure. Before sample insertion, inspect the chamber for cleanliness and dryness. The chamber face must be moisture free prior to sealing chamber lid.

The chamber lid may be removed after process by alternatively and evenly loosening all of the knurl nuts using the spanning wrench in a "Star Pattern".



Spanning Wrench Opening Knurl Nut