

# Autosamdri®-931 Multi-Application CPD

## 2.50" Process Chamber, Non-Cleanroom Version



**tousimis**

- Multi-Application Critical Point Dryer
- "Stasis Software" for Challenging Sample Types
- Winner of Microscopy Today Innovation Award
- Post Process Data Review
- Multiple Sample Holder Options
- Program and Save Custom Recipes
- Made in U.S.A.

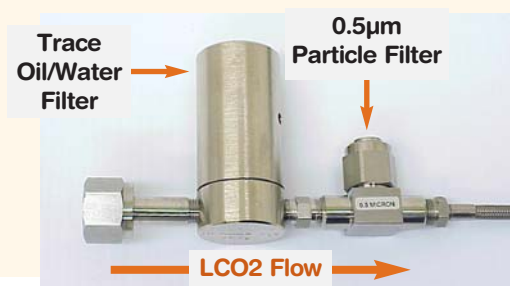
# Autosamdri®-931 with 2.50in Chamber (Cat. # 8787B)

## FEATURES

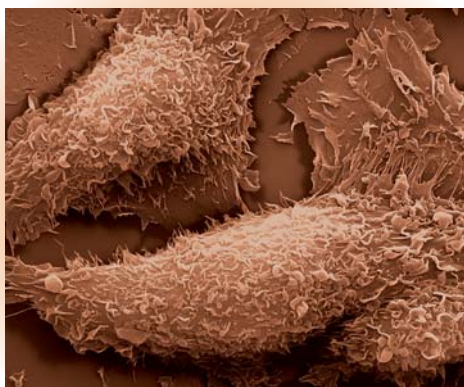
- Bright LCD Touchscreen Control
- Default "Automode" setting suitable for majority of sample types
- Create and save custom Recipes exactly for your specific sample needs
- Easy view placement of Micro Metering Valves with Vernier Handles
- Slow Fill feature protects the most delicate samples
- Internal 0.5µm particulate filtration protects valves and samples
- LCO2 Tank trace Oil/Water/0.5µm In-line Delivery Filtration
- External 0.5µm Post-Purge filter allows for simple maintenance
- Fast adiabatic chamber cooling ( $\approx$  2 minutes from 25°C to 3°C)
- Internal SOTER™ Condenser quietly separates waste alcohol and CO2
- EZ top loading process chamber with LED illumination
- Maintenance Free Non-Mechanical Vortex Swirl™ Purge Stirring
- "Stasis Software" for drying GELS and other challenging sample types
- Post Process Data Review
- All components meet CE, UL and/or U.S. Military specifications
- 2 year warranty on all parts and labor
- Made in U.S.A.



Released Cantilevers after Thermal Annealing  
**Nicolas André**  
*Université Catholique de Louvain, Belgium*



#8784 LCO2 Filter Assembly  
 Pre-Installed with High Pressure Hose



SKBR3 Breast Cancer Cells

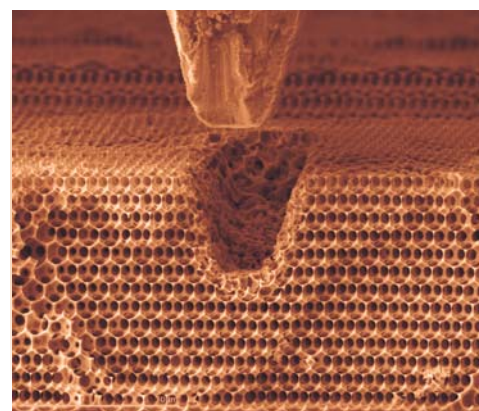
*Dr. Rita Serda, Ph.D., The University of Texas  
 Health Science Center at Houston*

## SPECIFICATIONS

- Cabinet: (W) 15.0" (38.0cm) x (H) 13.25" (33.5cm) x (D) 20" (50.8cm)
- System Set-Up Area Required: (W) 24" (61cm) x (D) 22" (56cm)
- Chamber size:  
 2.50" ID x 1.25" Depth (63.50mm ID x 31.75mm Depth) - 100ml Volume
- Pressure Gauge Range: 0 to 2000 psi, Temperature Range - 30°C to 60°C
- 120V or 220V Models Available

## STANDARD ACCESSORIES

- Flexible High-Pressure LCO2 Supply Hose, 5ft (1.5m)  
 (Note: Other lengths available upon request up to 50ft)
- External LCO2 Filtration System (#8784) removes water/oil and particulates down to 0.5µm conveniently pre-installed onto your LCO2 High Pressure Hose
- Static Free Exhaust Tubing
- Flow Meter supplied allows precise BLEED Exhaust Calibration
- Chamber Insert included that reduces LCO2 consumption and reduces chamber ID from 2.50" down to 1.25"
- Spare chamber O-rings (2), LED chamber lamp (1), and 5A slo-blow fuses (2)
- User Manual and Check-Out Data Sheet
- Installation Tool Kit
- **Free lifetime technical support**



Inverse Opal  
**Julia R. Greer / Greer Group**  
*Caltech / Materials Science and Mechanics*

**Visit our website at [tousimis.com](http://tousimis.com) or contact us about sample holders.**

\* U.S. patented (# 6,493,964) or patent pending.

**Note:** Actual delivered model or accessories may vary slightly as advancements are integrated into systems.