

# Autosamdri®-931 Multi-Application CPD

3.40" Process Chamber, *Cleanroom Version*



**tousimis**  


- *Multi-Application Critical Point Dryer for Cleanroom Use*
- *"Stasis Software" for Challenging Sample Types*
- *Winner of Microscopy Today Innovation Award*
- *Post Process Data Review*
- *HF Compatible Holders Included with System*
- *Program and Save Custom Recipes*
- *Made in U.S.A.*

# Autosamdri®-931 with 3.40in Chamber (Cat. # 8787F)

## FEATURES

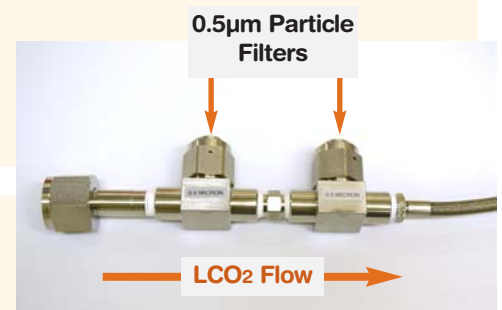
- Cleanroom Material Fabricated Static Free Design
- Bright LCD Touchscreen Control
- Default "Automode" setting suitable for most wafer and die MEMS applications
- Process up to 5 substrates per process run (either Wafers or Die)
- HF Compatible Holders for 3" (75mm), 2" (50mm) diameter wafers and 10mm square die included with system
- Create and save custom Recipes exactly for your specific sample needs
- Easy View Placement of Micro Metering Valves with Vernier Handles
- Slow Fill feature protects the most delicate samples
- Fast adiabatic chamber cooling ( $\approx$  3 minutes from 25°C to 3°C)
- Maintenance Free Non-Mechanical Vortex Swirl™ Purge Stirring
- External 0.5 $\mu$ m Post-Purge filter access for easy preventive maintenance
- External LCO<sub>2</sub> tank supply particulate filtration using 'Double T-Filter' design with 99.5%+ retention
- Internal filtration delivers filtered LCO<sub>2</sub> down to 0.08 $\mu$ m with 99.999+% retention directly into process chamber
- Internal SOTER™ Condenser quietly separates waste alcohol and CO<sub>2</sub> while eliminating any freeze up or static discharge
- EZ top loading process chamber with LED illumination
- "Stasis Software" for drying GELS and other challenging sample types
- Post Process Previous Run Data Review
- All components meet CE, UL and/or U.S. Military specifications
- 2 year warranty on all parts and labor
- Made in U.S.A.



Released Cantilevers after Thermal Annealing  
**Nicolas André**  
*Université Catholique de Louvain, Belgium*

## SPECIFICATIONS

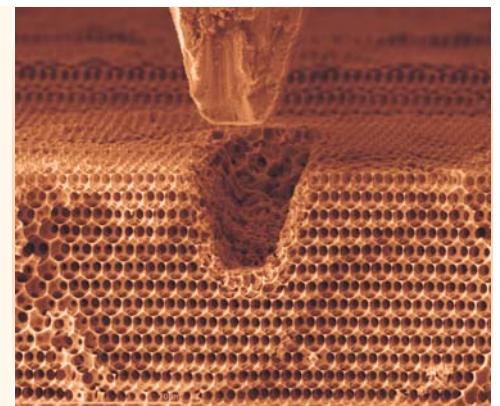
- Cabinet: (W) 15.0" (38.0cm) x (H) 13.25" (33.5cm) x (D) 20" (50.8cm)
- System Set-Up Area Required: (W) 24" (61cm) x (D) 22" (56cm)
- Chamber size:  
 3.40" ID x 1.25" Depth (86.36mm ID x 31.75mm Depth) - 186ml Volume
- Pressure Gauge Range: 0 to 2000 psi, Temperature Range - 30°C to 60°C
- 120V or 220V Models Available



Double T-Filter Assembly (#8785)  
 Pre-Installed onto High Pressure Hose

## STANDARD ACCESSORIES

- Flexible High-Pressure LCO<sub>2</sub> Supply Hose, 10ft (3.0m)  
 Note: Other lengths available upon request up to 50ft (15m)
- HF Compatible Substrate Holders included: 3" (75mm) and 2" (50mm) wafer holders as well as a 10mm square die holder for up to 5 die
- Chamber Insert included that reduces LCO<sub>2</sub> consumption and reduces chamber ID from 3.40" down to 1.25"
- Double T-Filter Assembly (#8785-see insert picture) pre-installed onto the LCO<sub>2</sub> high-pressure hose. LCO<sub>2</sub> filtered twice thru 0.5 $\mu$ m filters prior to LCO<sub>2</sub> entering Autosamdri®-931 process chamber
- Static Free Exhaust Tubing
- Flow Meter supplied allows precise BLEED Exhaust Calibration
- Spare chamber O-rings (2), LED chamber lamp (1), and 5A slo-blow fuses (2)
- User Manual and Check-Out Data Sheet
- Installation Tool Kit
- **Free Lifetime Technical Support**



Inverse Opal  
**Julia R. Greer / Greer Group**  
*Caltech / Materials Science and Mechanics*

**Please contact us for custom substrate holders**